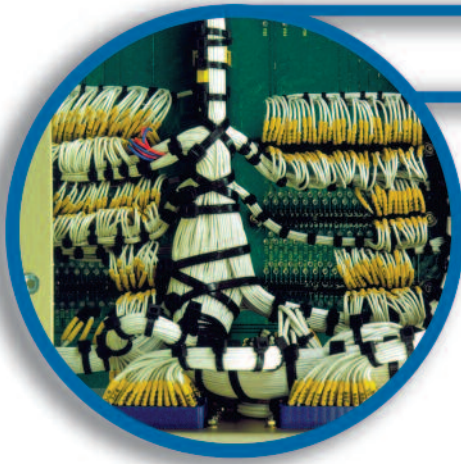


Type 99M Wire



Type 99M wire has a dual-wall construction of radiation cross-linked modified polyester. It is designed to meet the stringent low fire hazard performance specified by many authorities, in particular for naval, mass transit and industrial panel wiring. Type 99M wire is highly flame retarded and has low smoke and corrosive gas generation whilst still retaining small size, lightweight, flexibility and resistance to chemicals and fluids. Type 99M wire is approved to Def-Stan 61-12 Part 18 Issue 4 Type 1.

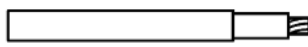


Technical Characteristics

Continuous operating temperature	-55°C to +125°C
Voltage rating	600V and 1000V
Flammability	IEC 332 Pt3 Pass

Part Numbering System

99 X X X X X- Size- X/X- X



Primary Wire



Twisted Pair



Screened & Jacketed Single



Screened & Jacketed Pair

Jacket Colour
(in accordance with MIL-STD-681 black preferred)

Primary Wire Insulation Colour
 0 = Black 3 = Orange 7 = Violet
 1 = Brown 4 = Yellow 8 = Grey
 2 = Red 5 = Green 9 = White
 2L = Pink 6 = Blue
 Additional number after base colour indicates stripe

Conductor Size (AWG)

Conductor Type
 1 = Tin-plated copper
 9 = Bare copper

Number of Conductors
 1, 2, 3, 4 etc

Class of Wire
 1 = 600V equipment wire
 2 = 1000V equipment wire

Construction
 0 = Primary wire & unscreened, unjacketed cables
 1 = Round braid screened & jacketed cable
 9 = Special construction

Type
 M = Military wire

Part Numbering Information

Type 99M-Primary wires/screened and jacketed cables

Size	Stranding (mm)	99M011X (600V) Primary wire		99M021X (1000V) Primary wire		99M1111 (600V) Screened & jacketed		99M1121 (600V) Screened & jacketed	
		OD (mm)	Weight (g/m)	OD (mm)	Weight (g/m)	OD (mm)	Weight (g/m)	OD (mm)	Weight (g/m)
26	19/0.10	0.88	2.0	1.01	2.2	1.80	7.5	2.91	13.3
24	19/0.12	0.98	3.0	1.17	3.4	1.90	9.2	3.20	16.6
22	19/0.15	1.13	4.4	1.37	4.9	2.05	11.1	3.52	20.5
20	19/0.20	1.40	6.5	1.57	7.3	2.30	14.6	4.02	27.7
18	19/0.25	1.65	9.9	1.85	10.9	2.55	19.3	4.57	37.1
16	19/0.30	1.90	14.2	2.10	14.5	2.95	24.9	5.13	48.5
14	37/0.25	2.25	18.6	2.50	21.8	3.13	30.9	5.72	60.5
12	37/0.32	2.60	25.7	2.97	31.3	3.48	43.4	6.42	86.0

Availability

Approvals: Def Stan 61-12 Part 18 Issue 4 Type 1
 Lloyds Register

